




sunproof®
fabrics for outdoor





TABLE OF COLORS

CARTENZA

6

NEW KOBLENZ

10

PINAMAR

14

NATADOLA

16

NEGRIL

18

ENVIRONMENTAL FRIENDLY

Woven from 100% solution dried olefin yarn.

Sunproof® has chosen to use the premium quality of Solution Dyed Olefin. Solution dyeing is a clean manufacturing process as the color is added before the yarn is extruded. It is friendly to the environment because no dye bath processes are used, eliminating waste effluents, which may pollute air and water.

Sunproof® Fabric is 100% recyclable.

EASY MAINTENANCE

Extreme stain resistant

Sunproof® fabric is carefully processed and has gone through a special treatment to reduce the fabric absorption of soil and stains. It keeps the fabric looking clean, fresh and new.

Water repellent

Sunproof® fabric is protected by an invisible shield around each of its fibers to keep the fabric dry and clean. It is a natural anti-adherer.

SUPERB UV PROTECTION

High UV protection rating

Sunproof® fabric has gone through high quality of testing and evaluated by an internationally recognized research and service center, the Hohenstein Institute, Germany.

Proven Quality

Sunproof® has obtained a UV standard 901 certificate - protect 80 means it is capable of blocking more than 97% UV Ray.

EXCELLENT WEATHERBILITY

Resistant to UV damage

Sunproof® applies excellent ultraviolet blocking agents which protect the polymer backbone of the fabric from the effects of UV radiation.

Perfect outdoor application

Therefore as an outdoor fabric, Sunproof® is proven to have a strong ability to withstand the effects of prolonged exposure to sunlight, wind, rain and humidity. It is long lasting.

WIDE RANGE OF DESIGNS

Sunproof provides choices

Every individual may have different taste and different color preferences. Therefore, wide variety of designs and colors are launched to the market to suit your needs.

Let us be a trend setter

Sunproof® makes every effort to be the leader in providing you new colors and designs one-step-ahead of others.

COLOR FASTNESS

Strong colorfastness to light

Some fabrics if exposed to sunlight for an extended period will fade or lose their intensity of color.

Sunproof® therefore ensures excellent quality of raw material is used. In accordance to British Standard (BS en ISO 105-804) for the colorfastness to light. Sunproof® fabric has been tested with the result of 7-8.

HYGIENE PROTECTION

Safe for your health

Sunproof® fabric is specially treated with a sanitized product for hygiene protection. This product inhibits microbial developments and mould stains.

Fluids from normal bodily functions leak through **normal** sheets and into the mattress. This causes the growth of dust mites and bacteria, which in turn are a major cause of asthma and skin conditions like eczema.

SAFE TO YOUR BABY

Sunproof® is Oeko-Tex certified. Oeko-Tex is the world's leading eco label for textile. Sunproof® is Oeko-Tex Certified class I.

Being certified class I means Sunproof® fabrics are free of substances which might be harmful to humans and the environment. It is safe even to baby's.



**MY FAVORITE
COLOR
IS BEACH**

CARTENZA COLORS

sunproof®
fabrics for outdoor



Technical Data

Design	CARTENZA
Composition	100% Olefin
Width (cm)	150
Weight (gr/m2)	238



Description	Test Standard	Result
Color Fastness to Artifitial Weathering	(BS EN ISO 105 - b04: 1999) - Max. 8	7-8
Color Fastness to Rubbing	(EN ISO 105-X12) Dry- and Wet Rubbing	Pass
Color Fastness to Chlorinated Pool Water	(BS EN ISO 105 EO3) - Max. 5	4-5
Color Fastness to Sea Water	(BS EN ISO 105 EO2) - Max . 5	4-5
Weatherability	(ASTM G53096) American Standards	1,500
Pilling Resistance	(EN ISO - 12945 - 2) Max. 5	5
Seam Slippage	(prEN ISO 13937 - 3)	Pass
Tear Strenght	(BS EN ISO 13937 - 3)	Pass
Tensile Strenght	(EN ISO 13934 - 1)	Pass
Water Repellency	(AATCC Test Method 22 - 2005)	80
Flamability	(BS EN 1021-1, 2006 - Cigarette)	Pass
Anti Mildew	AATC 147: 2011 & 30 : 2004)	Pass

Stock may vary from sample in color & texture.

CARTENZA



Cartenza 130
White



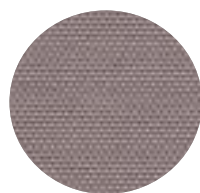
Cartenza 144
Canvas



Cartenza 180
Beige



Cartenza 130
Liver



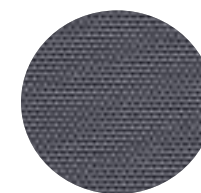
Cartenza 130
Taupe



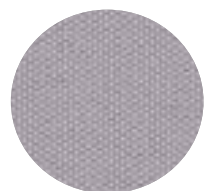
Cartenza 130
Black



Cartenza 130
Graphite



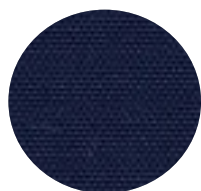
Cartenza 130
Anthracite



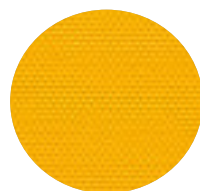
Cartenza 165
Ash Grey



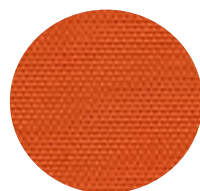
Cartenza 1080
Brown



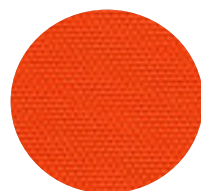
Cartenza 121
Navy



Cartenza 050
Yellow



Cartenza 101
Light Orange



Cartenza 100
Orange



Cartenza 110
Ferrari Red



Cartenza 110
Red



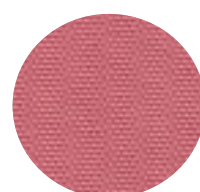
Cartenza 030
Burgundy



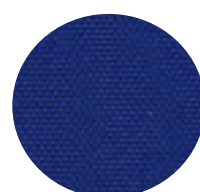
Cartenza 060
Purple



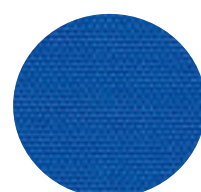
Cartenza 190
Pink



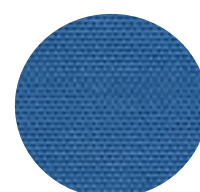
Cartenza 195
Light Pink



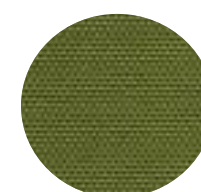
Cartenza 122
Ocean Blue



Cartenza 044
Cobalt Blue



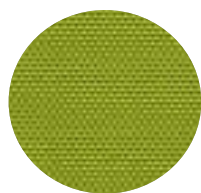
Cartenza 040
Blue



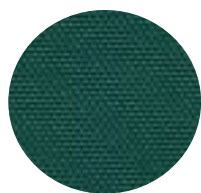
Cartenza 130
Olive Green



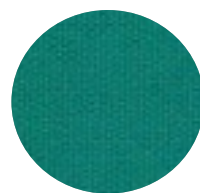
Cartenza 020
Lime Green



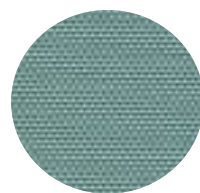
Cartenza 021
Moss Green



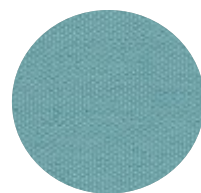
Cartenza 230
Dark Green



Cartenza 223
Petrol



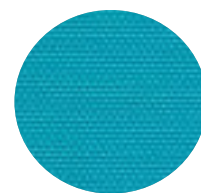
Cartenza 220
Sea Green



Cartenza 221
Bright Blue



Cartenza 042
Sky Blue



Cartenza 210
Aqua Blue





**CHANGE IS
RARELY
COMFORTABLE**

NEW KOBLENZ

sunproof®
fabrics for outdoor



Technical Data

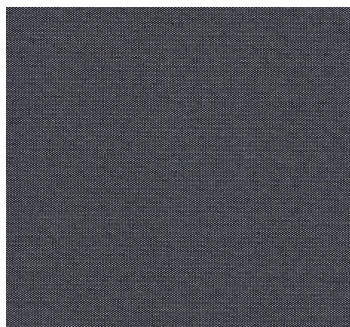
Design	NEW KOBLENZ
Composition	100% Olefin
Width (cm)	150
Weight (gr/m2)	238



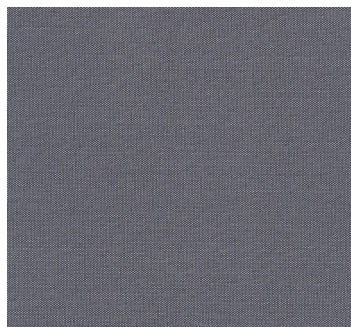
Description	Test Standard	Result
Color Fastness to Artifitial Weathering	(BS EN ISO 105 - b04: 1999) - Max. 8	7-8
Color Fastness to Rubbing	(EN ISO 105-X12) Dry- and Wet Rubbing	Pass
Color Fastness to Chlorinated Pool Water	(BS EN ISO 105 EO3) - Max. 5	4-5
Color Fastness to Sea Water	(BS EN ISO 105 EO2) - Max . 5	4-5
Weatherability	(ASTM G53096) American Standards	1,500
Pilling Resistance	(EN ISO - 12945 - 2) Max. 5	5
Seam Slippage	(prEN ISO 13937 - 3)	Pass
Tear Strenght	(BS EN ISO 13937 - 3)	Pass
Tensile Strenght	(EN ISO 13934 - 1)	Pass
Water Repellency	(AATCC Test Method 22 - 2005)	80
Flamability	(BS EN 1021-1, 2006 - Cigarette)	Pass
Anti Mildew	AATC 147: 2011 & 30 : 2004)	Pass

Stock may vary from sample in color & texture.

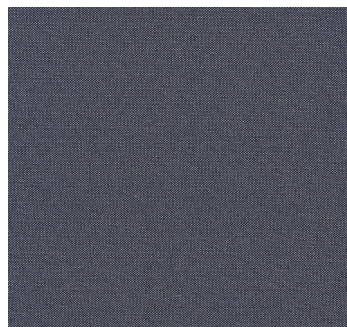
NEW KOBLENZ



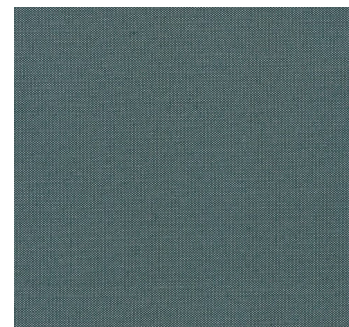
Berlin 090
Black



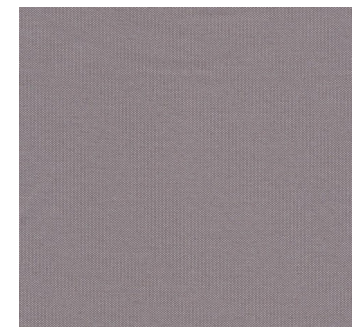
Berlin 160
Anthracite



Berlin 120
Navy



Berlin 230
Dark Green



Berlin 180
Taupe



New Koblez 090
Black



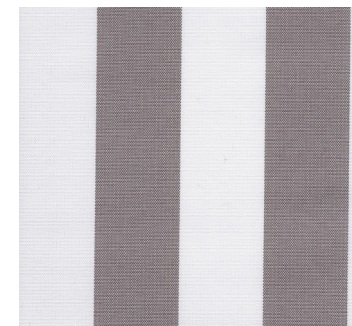
New Koblenz 160
Anthracite



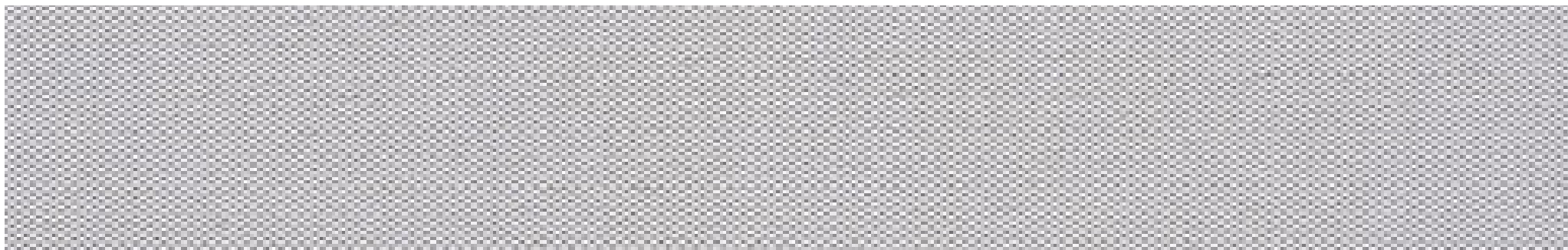
New Koblenz 120
Navy



New Koblenz 230
Dark Green



New Koblenz 180
Taupe



Berlin 164 White/Grey





**YOU ARE
MY FAVORITE
COLOR**

PINAMAR

NATADOLA

NEGRIL

sunproof®
fabrics for outdoor

**Matras
Factory**

Technical Data

Design	NEGRIL	PINAMAR	NATADOLA
Composition	100% Olefin	100% Olefin	100% Olefin
Width (cm)	142	142	142
Weight (gr/m2)	287	296	296

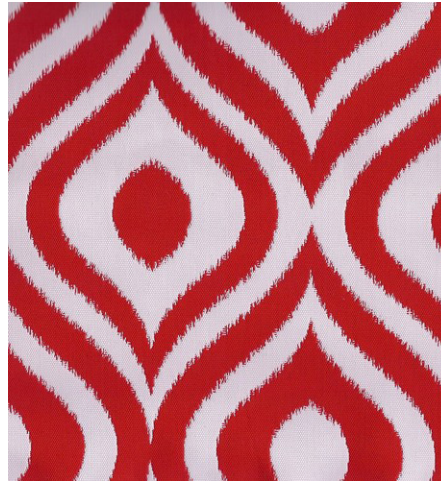


Description	Test Standard	Result
Color Fastness to Artifitial Weathering	(BS EN ISO 105 - b04: 1999) - Max. 8	7-8
Color Fastness to Rubbing	(EN ISO 105-X12) Dry- and Wet Rubbing	Pass
Color Fastness to Chlorinated Pool Water	(BS EN ISO 105 EO3) - Max. 5	4-5
Color Fastness to Sea Water	(BS EN ISO 105 EO2) - Max . 5	4-5
Weatherability	(ASTM G53096) American Standards	1,500
Pilling Resistance	(EN ISO - 12945 - 2) Max. 5	5
Seam Slippage	(prEN ISO 13937 - 3)	Pass
Tear Strenght	(BS EN ISO 13937 - 3)	Pass
Tensile Strenght	(EN ISO 13934 - 1)	Pass
Water Repellency	(AATCC Test Method 22 - 2005)	80
Flamability	(BS EN 1021-1, 2006 - Cigarette)	Pass
Anti Mildew	AATC 147: 2011 & 30 : 2004)	Pass

Stock may vary from sample in color & texture.



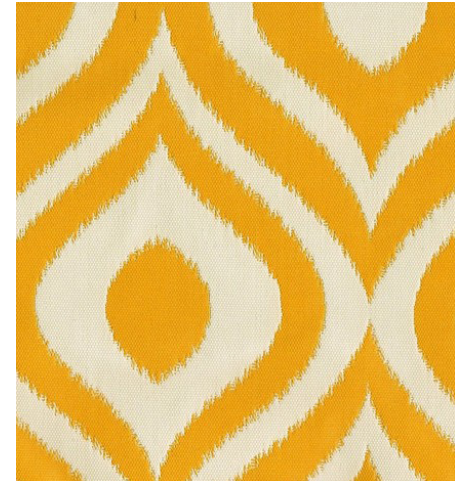
Pinamar 090
Black



Pinamar 010
Red



Pinamar 101
Orange



Pinamar 050
Yellow



Pinamar 044
Navy



Pinamar 161
Taupe



Pinamar 210
Aqua



Pinamar 021
Moss Green



NATADOLA



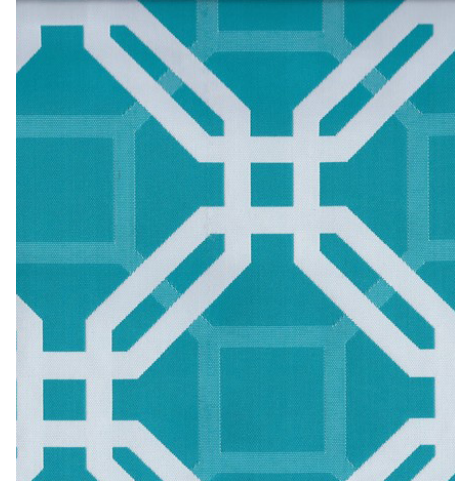
Natadola 161
Taupe



Natadola 090
Black



Natadola 044
Navy



Natadola 210
Aqua



Natadola 021
Moss Green



Natadola 050
Yellow



Natadola 101
Orange



Natadola 010
Red



NEGRIL



Negril 090
Black



Negril 044
Navy



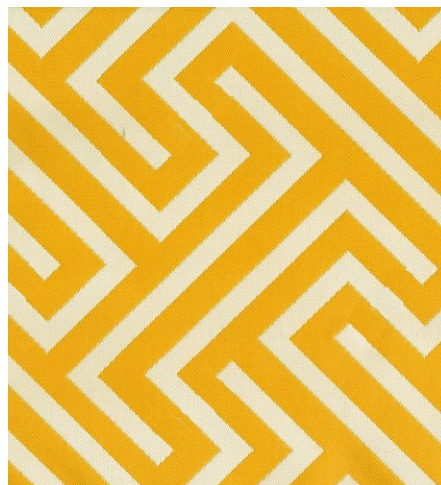
Negril 210
Aqua



Negril 161
Taupe



Negril 021
Moss Green



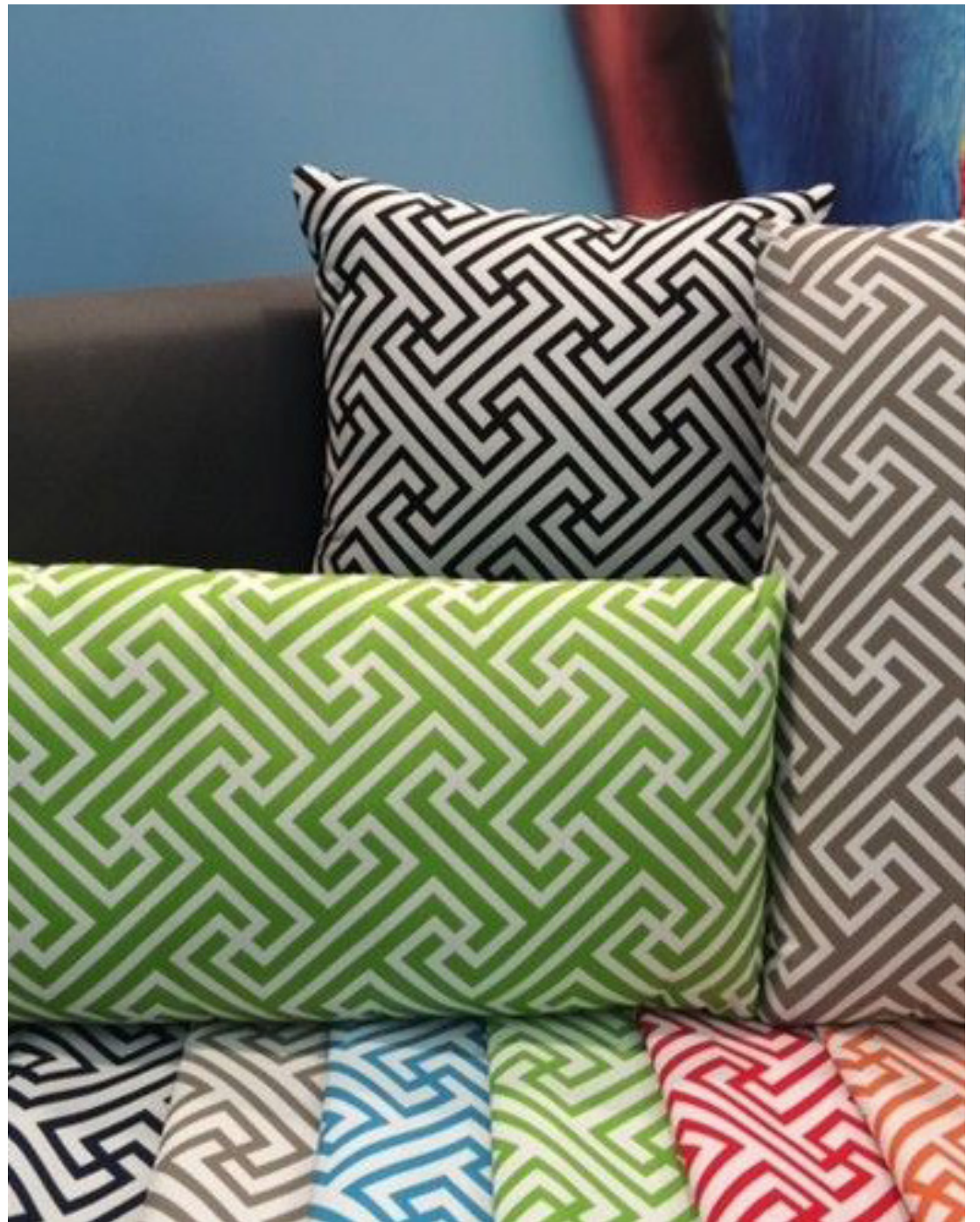
Negril 050
Yellow



Negril 101
Orange



Negril 010
Red





Contact

E - info@matrasfactory.nl

T - 0513 - 64 04 01

F - 0516 - 61 50 09

Adres

Matras Factory

Businesspark Friesland-West 7

8447SL Heerenveen

